

PRODUCT INFORMATION PACKET

Model No: 215TTFWD16051

Catalog No: C226B

10 HP General Purpose Motor, 3 phase, 1800 RPM, 230/460 V, 215TC Frame, TEFC
Three Phase TEFC Motors



Nameplate Specifications

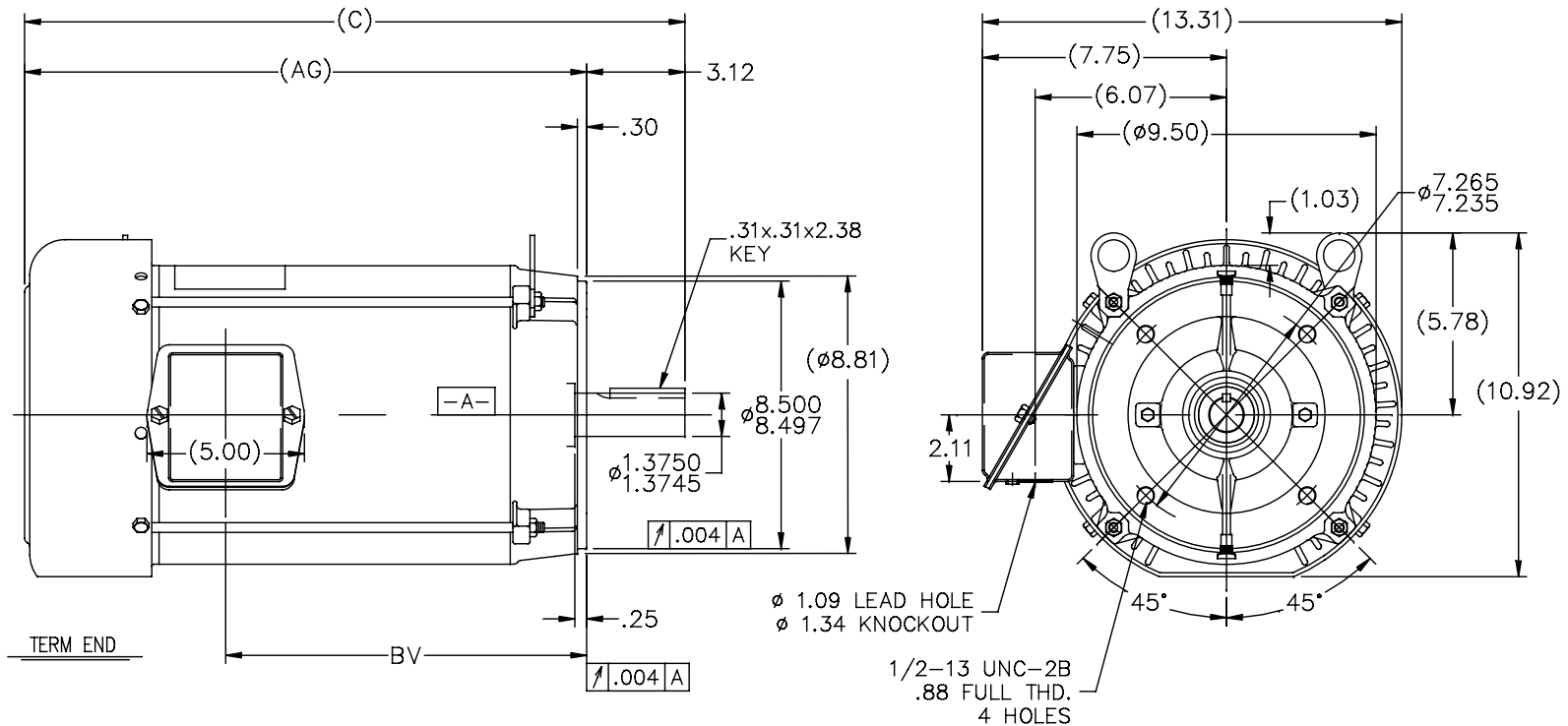
Output HP	10 Hp	Output KW	7.5 kW
Frequency	60 Hz	Voltage	230/460 V
Current	26.4/13.2 A	Speed	1760 rpm
Service Factor	1.15	Phase	3
Efficiency	91.7 %	Power Factor	77.5
Duty	Continuous	Insulation Class	F
Design Code	B	KVA Code	H
Frame	215TC	Enclosure	Totally Enclosed Fan Cooled
Thermal Protection	No	Ambient Temperature	40 °C
Drive End Bearing Size	6309	Opp Drive End Bearing Size	6206
UL	Recognized	CSA	Y
CE	Y	IP Code	43

Technical Specifications

Electrical Type	Squirrel Cage Induction Run	Starting Method	Across The Line
Poles	4	Rotation	Reversible
Resistance Main	.9 Ohms	Mounting	Round
Motor Orientation	Horizontal	Drive End Bearing	Ball
Opp Drive End Bearing	Ball	Frame Material	Rolled Steel
Shaft Type	T	Overall Length	20.96 in
Frame Length	11.15 in	Shaft Diameter	1.375 in
Shaft Extension	3.12 in	Assembly/Box Mounting	F1/F2 CAPABLE
Outline Drawing	SS86634-1115	Connection Drawing	005010.01

This is an uncontrolled document once printed or downloaded and is subject to change without notice. Date Created:27/03/2020

SS86634



DASH	FR.	C	AG	BV	MOUNTING
965	213T	19.46	16.34	9.96	
1115	213/15T	20.96	17.84	11.46	
1240	213/15T	22.21	19.09	12.71	

NOTES:
 1. NAMEPLATE TO BE READ FROM C'BOX SIDE OF MOTOR.
 2. BOX CAN BE MOUNTED IN 90° STEPS.

NO.	REVISION	BY & DATE	CHK	ANG	FINISH	TOLERANCES UNLESS SPECIFIED	DRAWN	PAGE OF						
								DEC.	INCHES	REV.				
6	UPDATED TO REGAL LOGO	SAJ 07/21/15	AJA				REGAL™	DRS	10-02-1996					
5	REDRAWN IN AUTOCAD	TAT 06-29-2004	ML				Regal Beloit America, Inc.	CHK	ML 10-03-1996					
4	UPDATED C' BOX GEOMETRY	CN 28425 DRS 01-31-2000		.X	±.1			APPD	DN 10-04-1996					
3	REMOVED GROUND SCREW FROM FRAME	CN 24453 DRS 10-01-1997		.XX	±.03	TITLE		SCALE	1=5					
2	REMOVED NOTE: BOX CAN BE MOUNTED ON OPPOSITE SIDE OF MOTOR	CN 23925-459 MJD 09-02-1997		.XXX	±.005	OUTLINE		REF						
				.XXX	±.0005	MAT'L.		FMF						
				ANG	±7'30"			PREV						
THIS DRAWING IN DESIGN AND DETAIL IS OUR PROPERTY AND MUST NOT BE USED EXCEPT IN CONNECTION WITH OUR WORK ALL RIGHTS OF DESIGN AND INVENTION ARE RESERVED THIS IS AN ELECTRONICALLY GENERATED DOCUMENT - DO NOT SCALE THIS PRINT							RFP	CAD FILE	ss86634	SIZE	DRAWING NO.	PAGE	OF	REV.
							DIST	LB		A	SS86634	6		6

005010-01

VIEW FROM OUTSIDE OF MOTOR AT SWITCH END.



VOLTAGE	L1	L2	L3	JOIN & INSULATE
HIGH	T1	T2	T3	(T4,T7) (T5,T8) (T6,T9)
LOW	T1,T7	T2,T8	T3,T9	T4,T5,T6

				TOLERANCES UNLESS SPECIFIED		Regal Beloit America, Inc.		DRAWN RDW 04/12/02				
				DEC.	INCHES			CHK				
				.X	±.1			APPD				
				.XX	±.01			SCALE 1=1				
				.XXX	±.005	TITLE		REF FIG.2-51				
A	UPDATED TO REGAL LOGO			SAJ	06/26/15	AJY	.XXXX	±.0005	MAT'L. DECAL - 004014	FMF		
NO.	REVISION			BY & DATE	CHK	ANG	±1/2"	FINISH	PREV			
THIS DRAWING IN DESIGN AND DETAIL IS OUR PROPERTY AND MUST NOT BE USED EXCEPT IN CONNECTION WITH OUR WORK ALL RIGHTS OF DESIGN AND INVENTION ARE RESERVED THIS IS AN ELECTRONICALLY GENERATED DOCUMENT - DO NOT SCALE THIS PRINT				RFP	04/12/02		CAD FILE	00501001		SIZE	DRAWING NO.	REV.
				DIST	BRF-NLV			A	005010-01		A	

Data Sheet

Date: 29-06-2017
 Customer: _____
 Attention: _____
 Submitted by: FAREEDA DUDEKULA



215TTFWD16051

Submittal
 Data @ 460 V

Motor Load Data

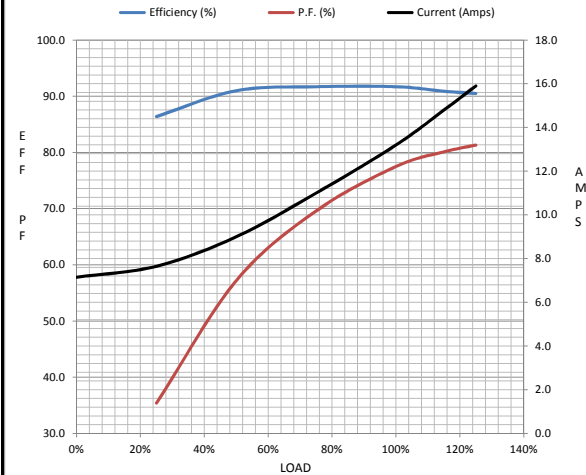
Load	0%	25%	50%	75%	100%	115%	125%	LR
Current (Amps)	7.2	7.7	9.0	11.0	13.2	14.8	15.9	81.0
Torque (ft-lb)	0.00	7.3	14.8	22.3	29.9	34.5	37.6	76.0
RPM	1800	1790	1780	1770	1760	1,754	1747	0
Efficiency (%)		86.4	91.0	91.7	91.7	90.9	90.5	
P.F. (%)	4.8	35.4	57.2	69.6	77.5	80.1	81.3	42.0

Motor Speed Data

	LR	Pull-Up	BD	Rated	Idle
Speed (RPM)	0	900	1575	1760	1800
Current (Amps)	81.0	78.0	51.0	13.2	7.2
Torque (ft-lb)	76.0	70.0	90.0	29.9	0.00

Information Block

HP	10.0			
Sync. RPM	1800			
Frame	215			
Enclosure	TEFC			
Construction	TFW			
Voltage	30/460#190/38V			
Frequency	60 Hz			
Design	B			
LR Code letter	H			
Service Factor	1.15			
Temp Rise @ FL	65 ° C			
Duty	CONT			
Ambient	40 ° C			
Elevation	1,000 feet			
Rotor/Shaft wk ²	1.10 Lb-Ft ²			
Ref Wdg	K2154513 NONE			
Sound Pressure @ 1M	62 dBA			
VFD Rating	NONE			
Outline Dwg	SS86634-1115			
Conn. Diag	005010.01			
Additional Specifications:				
0				
365THFS8036				
EQUIV CKT (OHMS / PHASE)				
R1	R2	X1	X2	Xm
0.5840	0.5050	1.7640	2.1360	36.0320



Speed -Torque Curve

